



孕龍科技股份有限公司
Zeroplus Technology Co., Ltd.

SPECIFICATION

MODEL: B10009-LAP-PT2262/PT2272-M

PART NO: _____

VERSION: V1.00

Approver		Check	Design
GM	PM		

Customer Confirm

*Please fax the file to Zeroplus Technology after signing.

2F, NO.123, Jian Ba Rd,
Chung Ho City, Taipei Hsian, R.O.C.

Tel: +886-2-66202225
Fax: +886-2-22234362



Content

1	Software Download	3
2	Software Installation.....	6
3	Software Register	10
4	User Interface	13
5	Operating Instructions	17



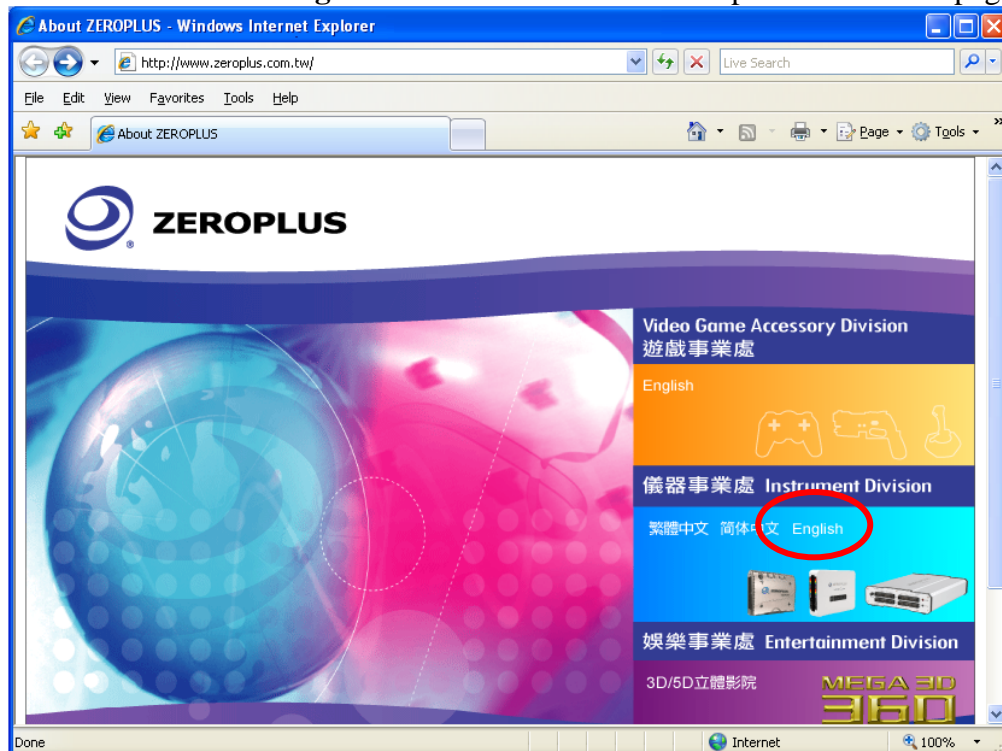
1 Software Download

Please download the software as the following steps:

Remark: We won't have additional notice for you, when there is any modification of the module specification. If there is some unconformity caused by the module version upgrade, users should take the module software as the standard.

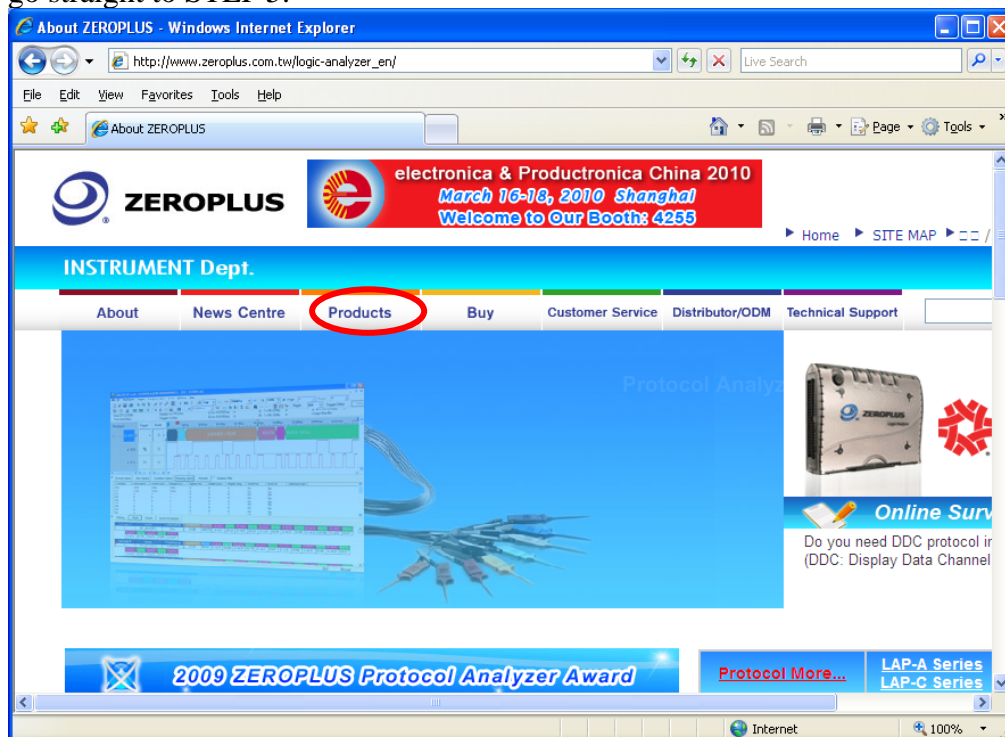
STEP 1. Visit the website of ZeroPlus: <http://www.zeroplus.com.tw>.

STEP 2. Click **English** in the Instrument Division part on the Homepage.

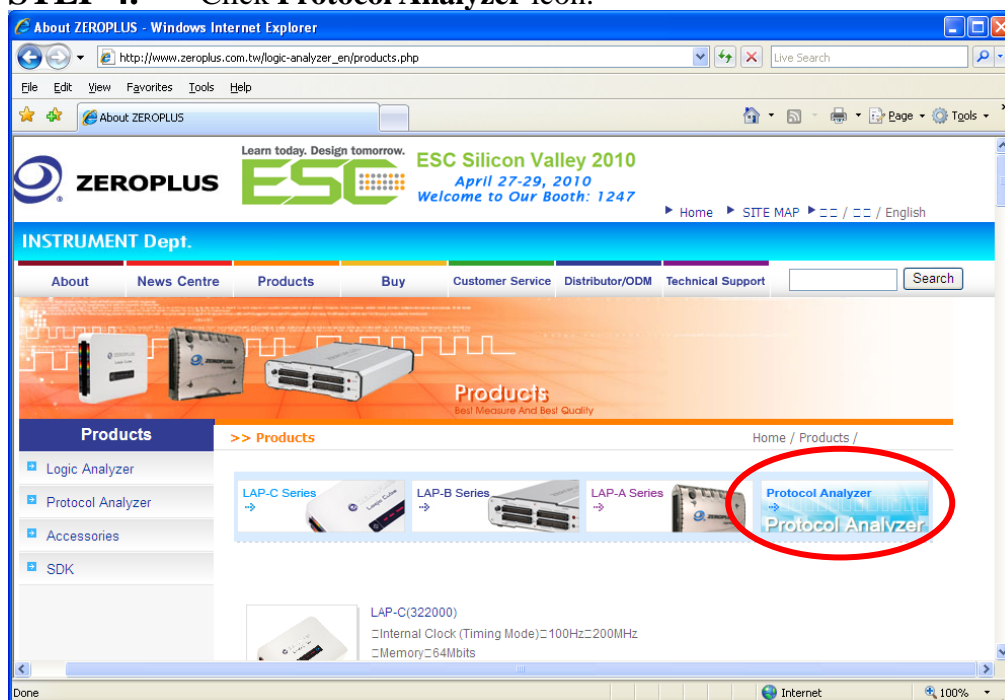




STEP 3. Click **Products** menu or select **Protocol Analyzer** item from its pull-down menu to go straight to STEP 5.

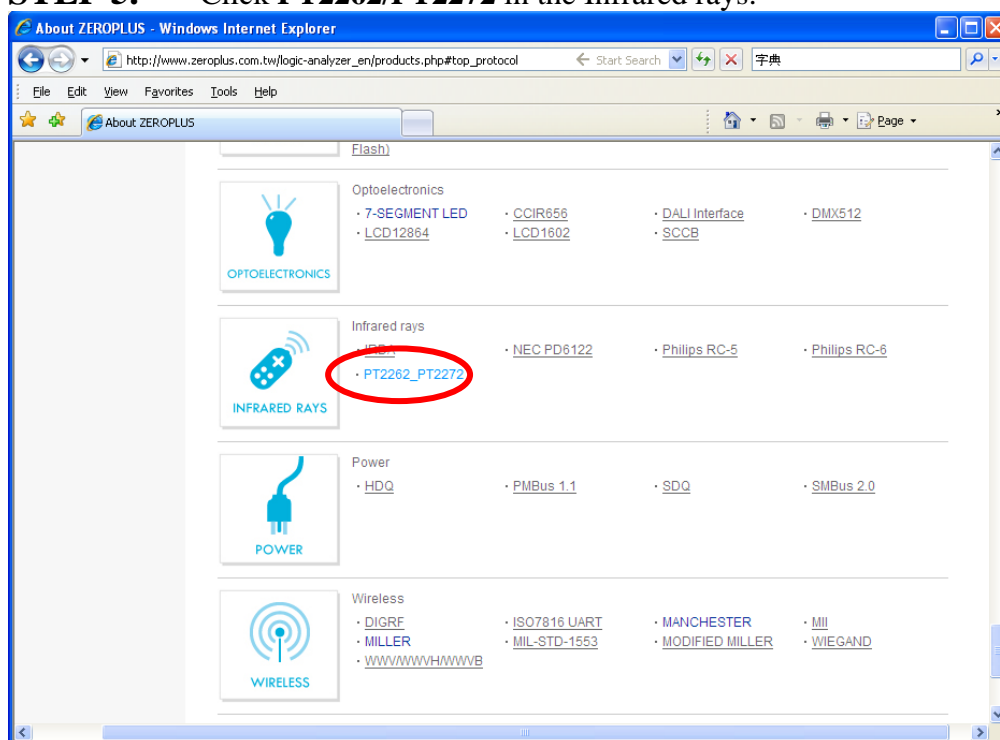


STEP 4. Click **Protocol Analyzer** icon.

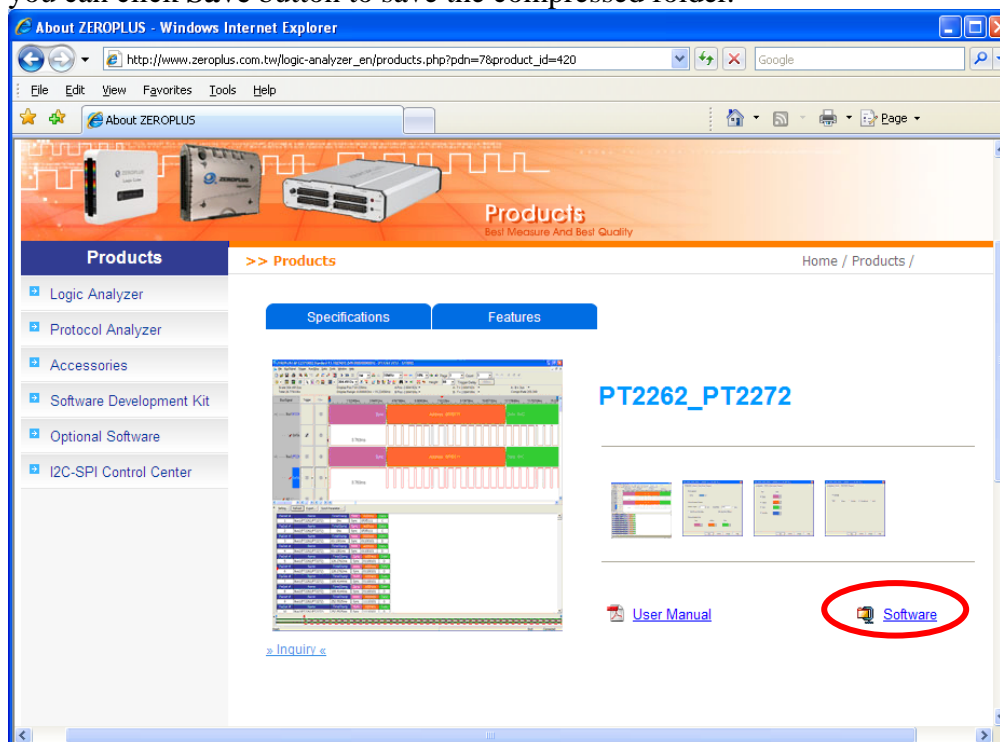




STEP 5. Click **PT2262/PT2272** in the Infrared rays.



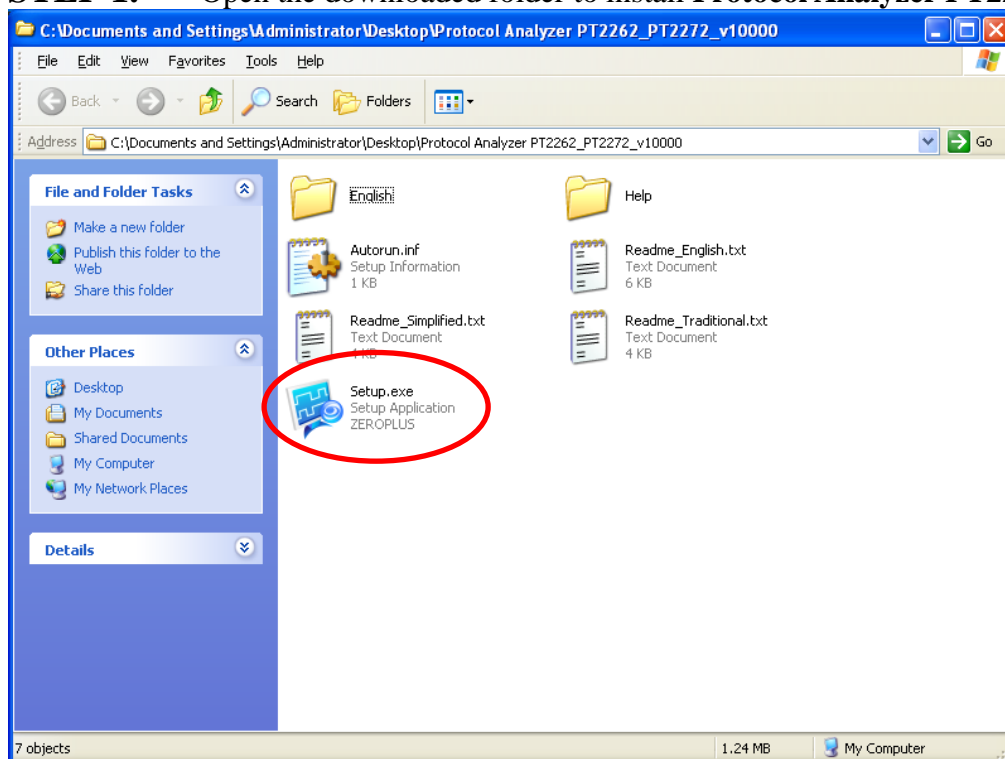
STEP 6. Click **Software** in the Products page. When the File Download dialog box appears, you can click **Save** button to save the compressed folder.



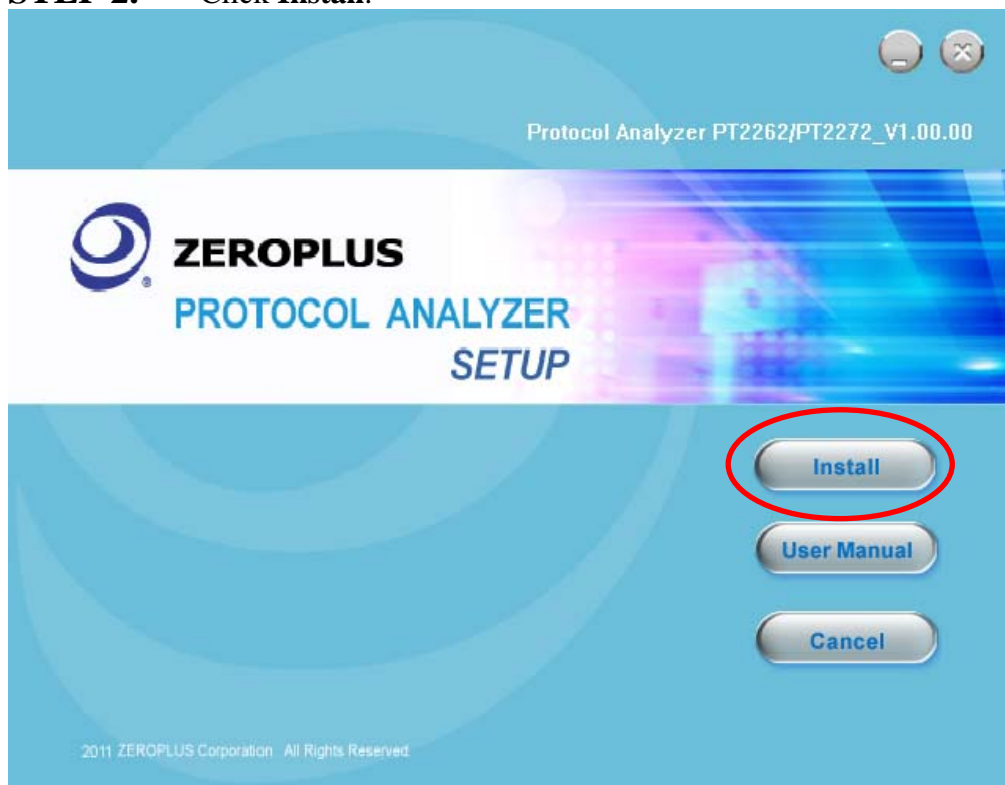


2 Software Installation

STEP 1. Open the downloaded folder to install **Protocol Analyzer PT2262/PT2272**.

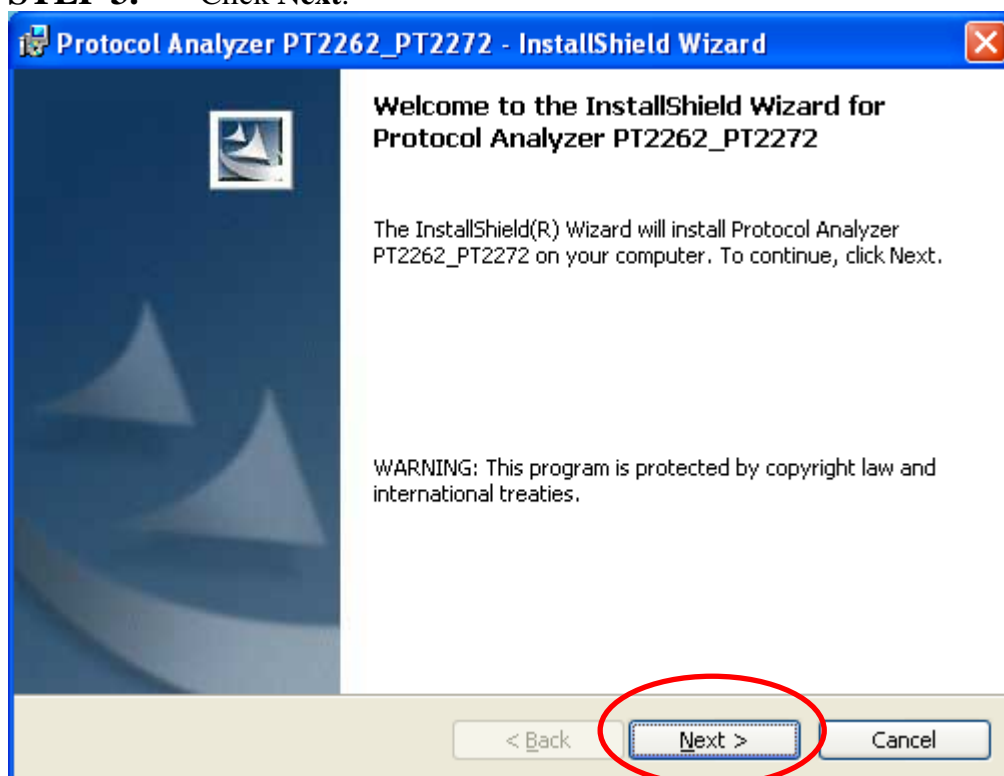


STEP 2. Click **Install**.

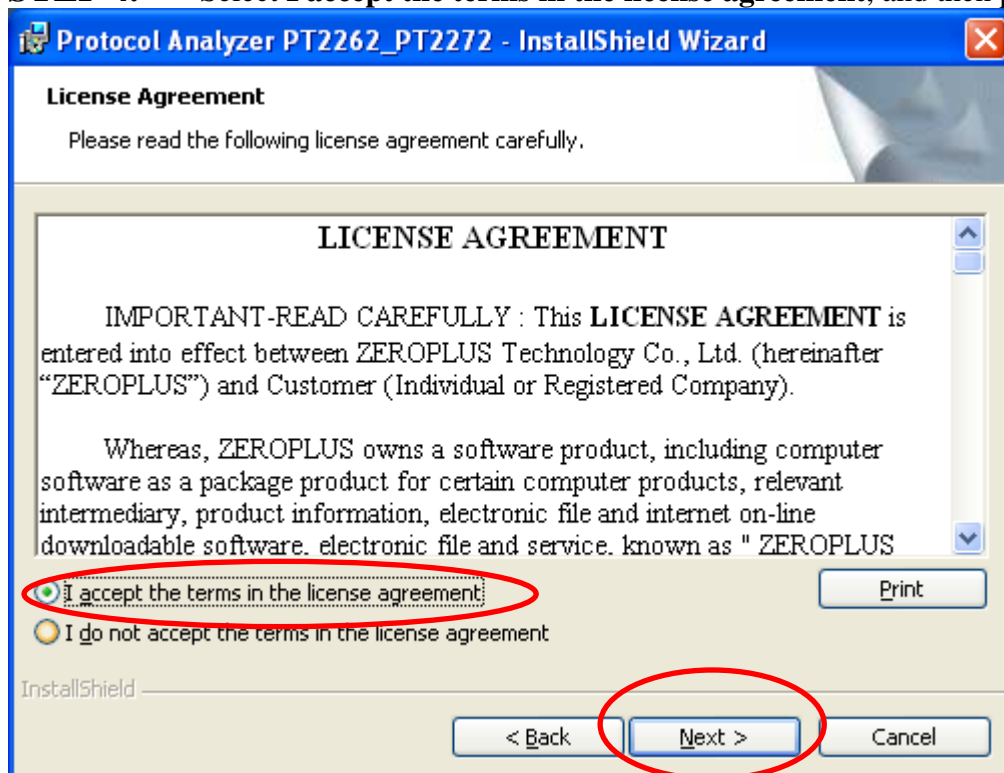




STEP 3. Click Next.



STEP 4. Select **I accept the terms in the license agreement**, and then press **Next**.





STEP 5. Fill in users' information in the below dialog box and click **Next**.

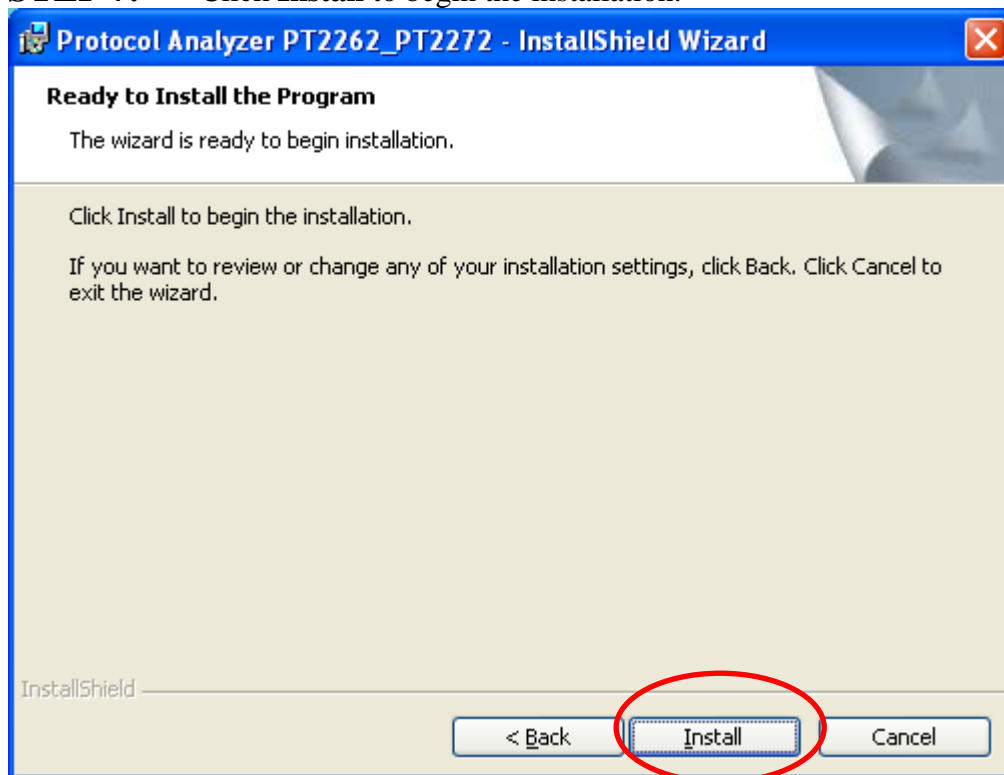
The dialog box is titled "Protocol Analyzer PT2262_PT2272 - InstallShield Wizard". It has a blue header bar with a close button (X) on the right. The main area is titled "Customer Information" and contains the text "Please enter your information." Below this, there are two text input fields: "User Name:" with "Microsoft" entered, and "Organization:" with "User" entered. Below the fields, there is a section titled "Install this application for:" with two radio button options: "Anyone who uses this computer (all users)" (which is selected) and "Only for me (Microsoft)". At the bottom, there is a status bar with the "InstallShield" logo. To the right of the status bar are three buttons: "< Back", "Next >" (which is circled in red), and "Cancel".

STEP 6. First, select **Complete** and then click **Next**.

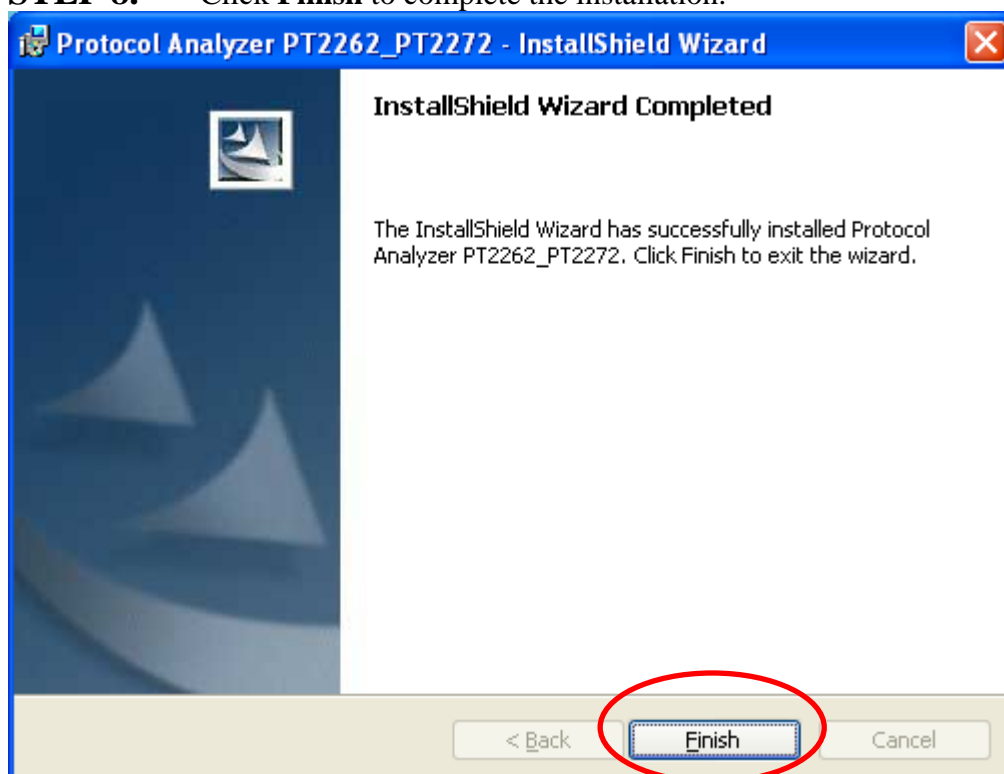
The dialog box is titled "Protocol Analyzer PT2262_PT2272 - InstallShield Wizard". It has a blue header bar with a close button (X) on the right. The main area is titled "Setup Type" and contains the text "Choose the setup type that best suits your needs." Below this, there is a section titled "Please select a setup type." with two radio button options: "Complete" (which is selected) and "Custom". Each option has a small icon of a computer with a red X and a description: "All program features will be installed. (Requires the most disk space.)" for Complete, and "Choose which program features you want installed and where they will be installed. Recommended for advanced users." for Custom. At the bottom, there is a status bar with the "InstallShield" logo. To the right of the status bar are three buttons: "< Back", "Next >" (which is circled in red), and "Cancel".



STEP 7. Click **Install** to begin the installation.



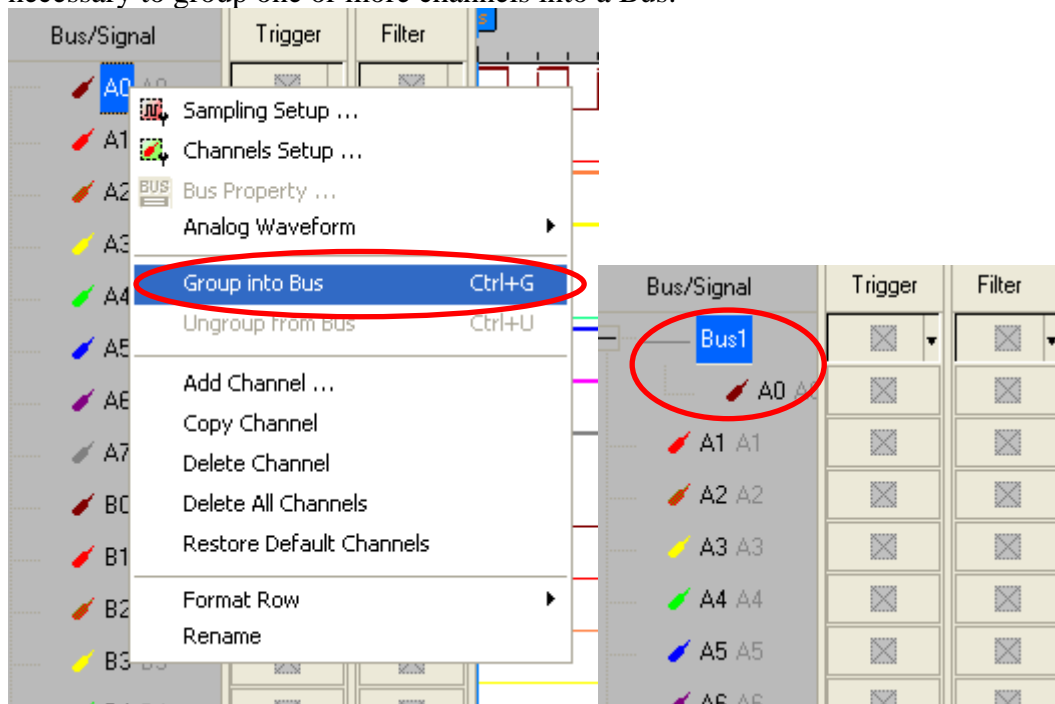
STEP 8. Click **Finish** to complete the installation.



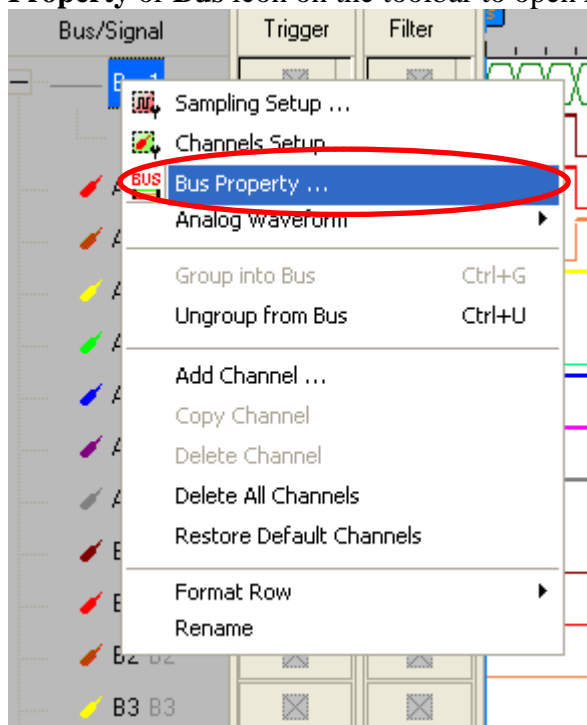


3 Software Register

STEP 1. Open the Logic Analyzer and group the unanalyzed channels into **Bus1** by pressing the **Right Key** on the mouse. PT2262/PT2272 needs one channel to decode signals, so it is necessary to group one or more channels into a Bus.

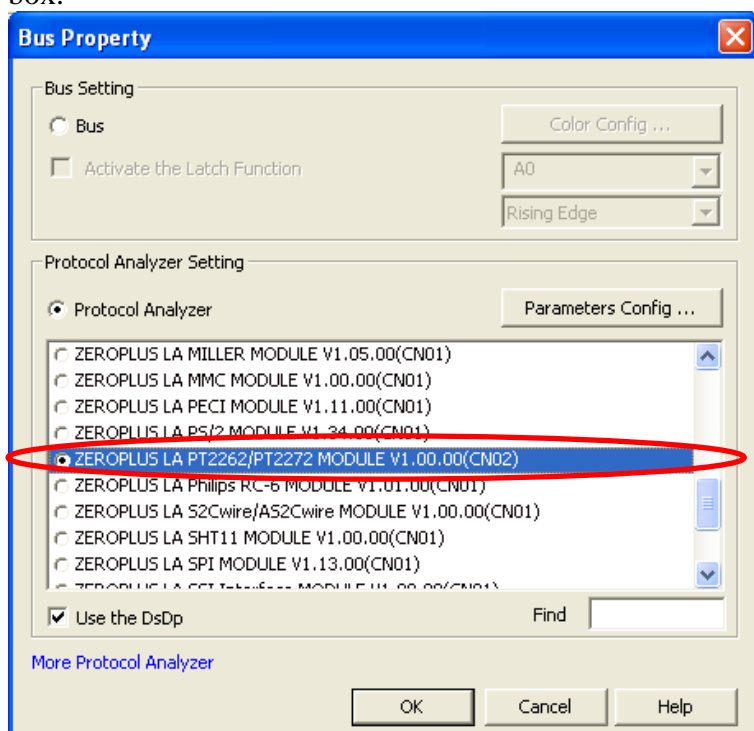


STEP 2. Select **Bus1**, and press **Right Key** on the mouse to list the menu, then press **Bus Property** or **Bus** icon on the toolbar to open **Bus Property** dialog box.

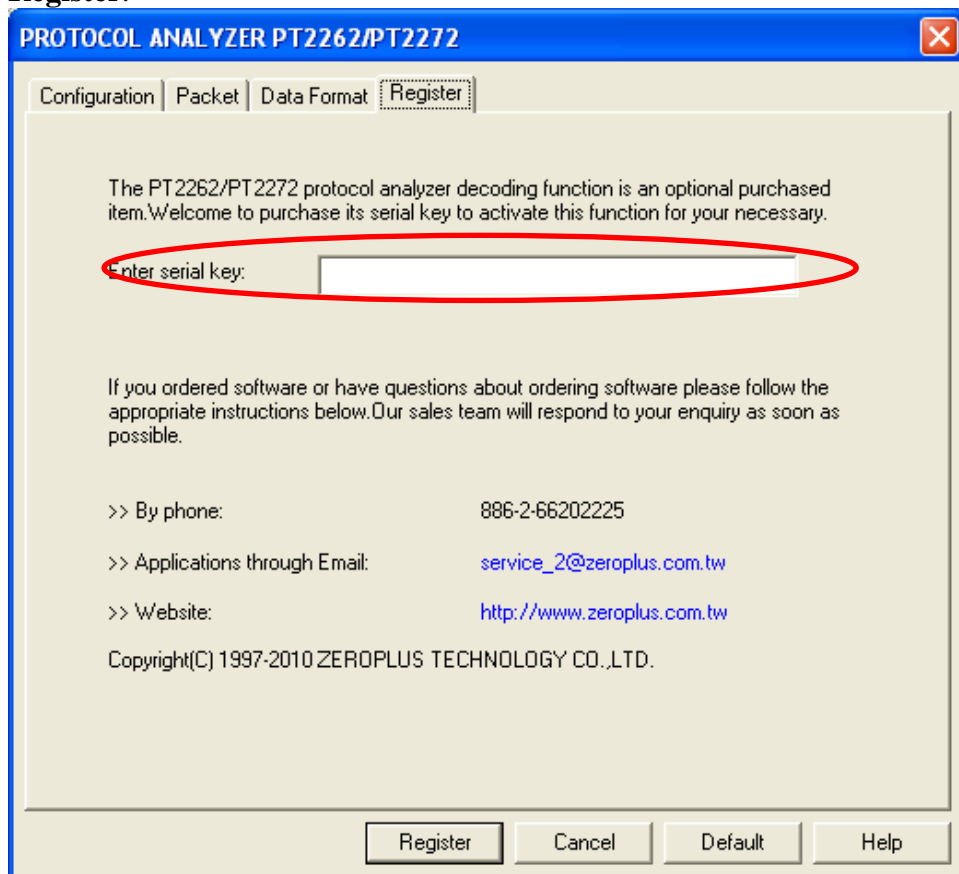




STEP 3. For Protocol Analyzer PT2262/PT2272 Parameters Configuration, select Protocol Analyzer, and then choose **ZEROPLUS LA PT2262/PT2272 MODULE V1.00.00(CN02)**. Next click **Parameters Configuration** to open the **PROTOCOL ANALYZER PT2262/PT2272** dialog box.

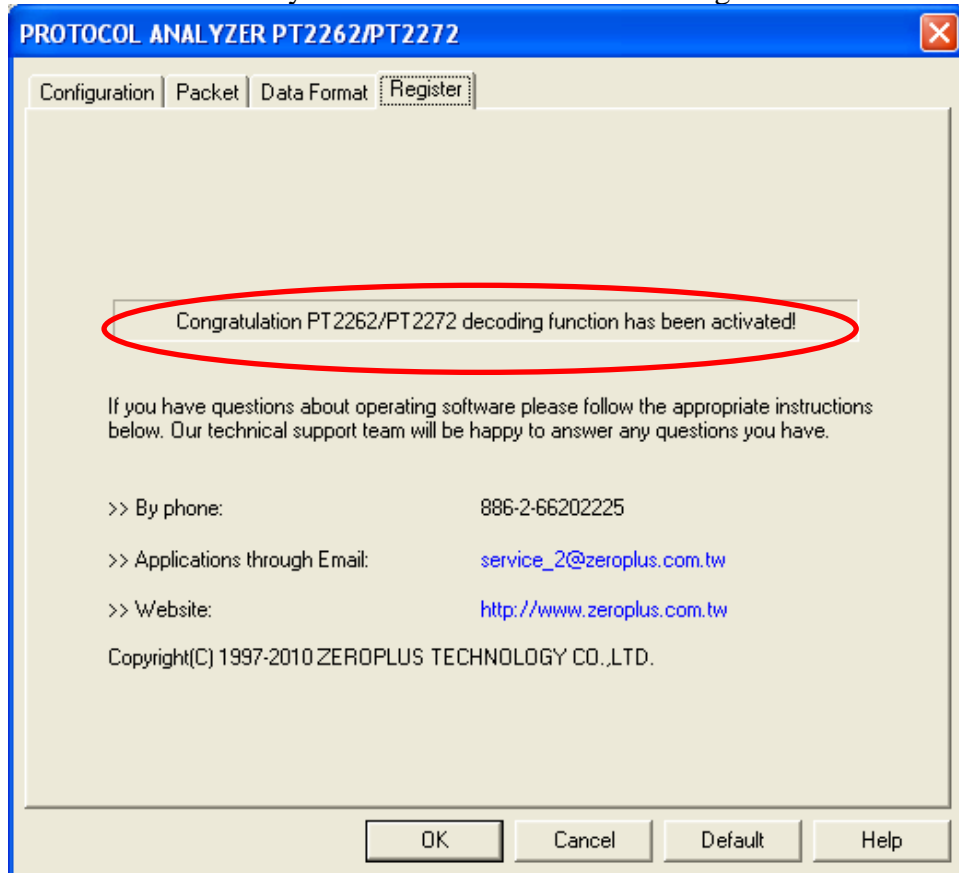


STEP 4. Press the Register tab to enter the serial key of the **PT2262/PT2272**. Then, press **Register**.





STEP 5. After pressing the Register button, the following dialog box will appear; it denotes that the Protocol Analyzer PT2262/PT2272 has been registered successfully.

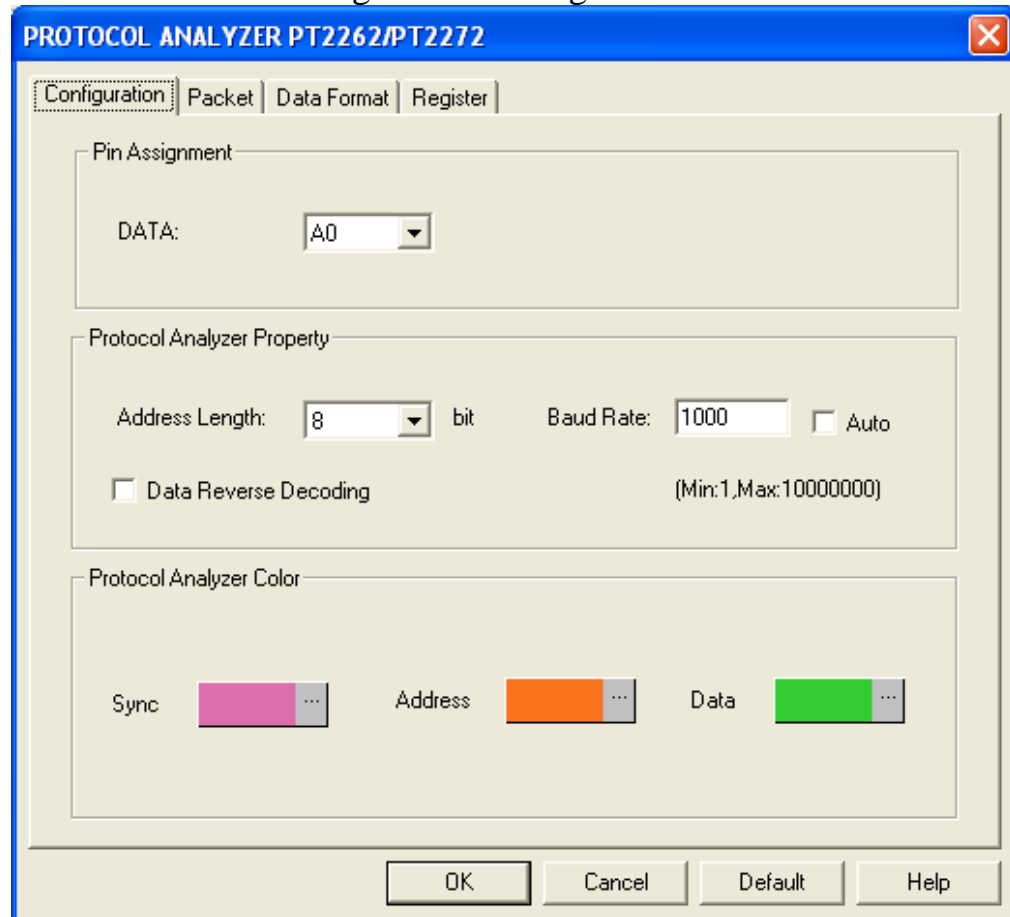




4 User Interface

In the configuration, please refer to below images to select options of **PT2262/PT2272** module.

PT2262/PT2272 Configuration Dialog Box



Pin Assignment:

PT2262/PT2272 only needs one channel to decode signals.

Protocol Analyzer Property:

Address Length: The Length of the Address can be selected from the options (4, 5, 6, 7, 8, 9, 10, 11 and 12) on the pull-down menu, and the default is 8.

Baud Rate: It is used to calculate the width of the waveform in the process of decoding. And the value of the Baud Rate can be set in the range from 1 to 10000000.

Auto: When the Auto is selected, the Baud Rate can be calculated and displayed automatically. But the Auto is not selected by default.

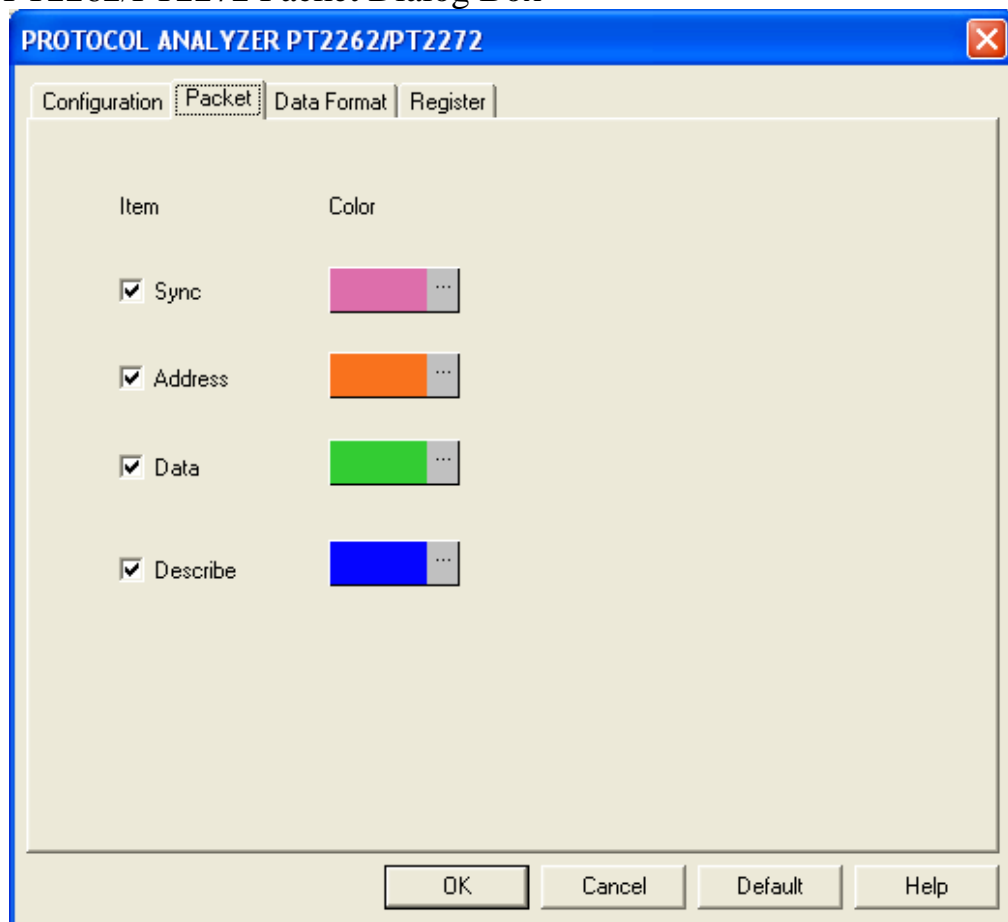
Data Reverse Decoding: When the Data Reverse Decoding is selected, the data will be decoded in reverse. But the default is that the Data Reverse Decoding is not selected.

Protocol Analyzer Color:

Users can vary the colors of the decoded packet.



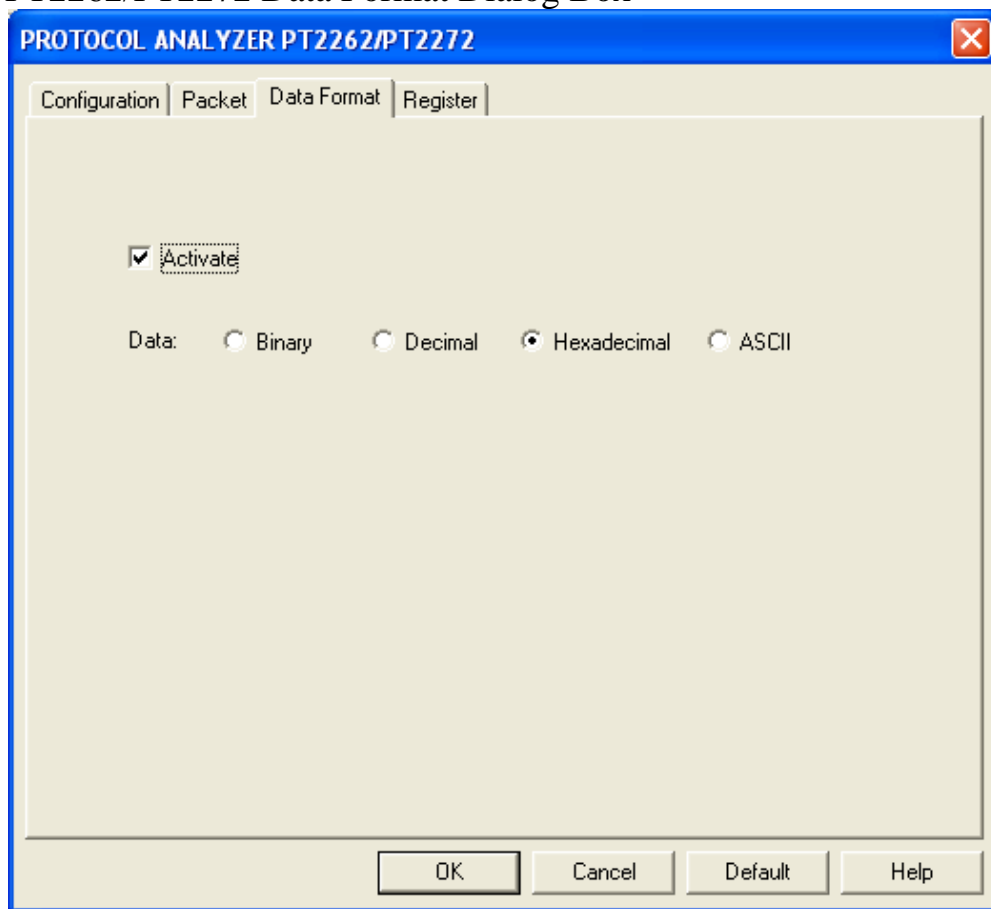
PT2262/PT2272 Packet Dialog Box



In the Packet dialog box, users can set the item to be displayed and the color of items.



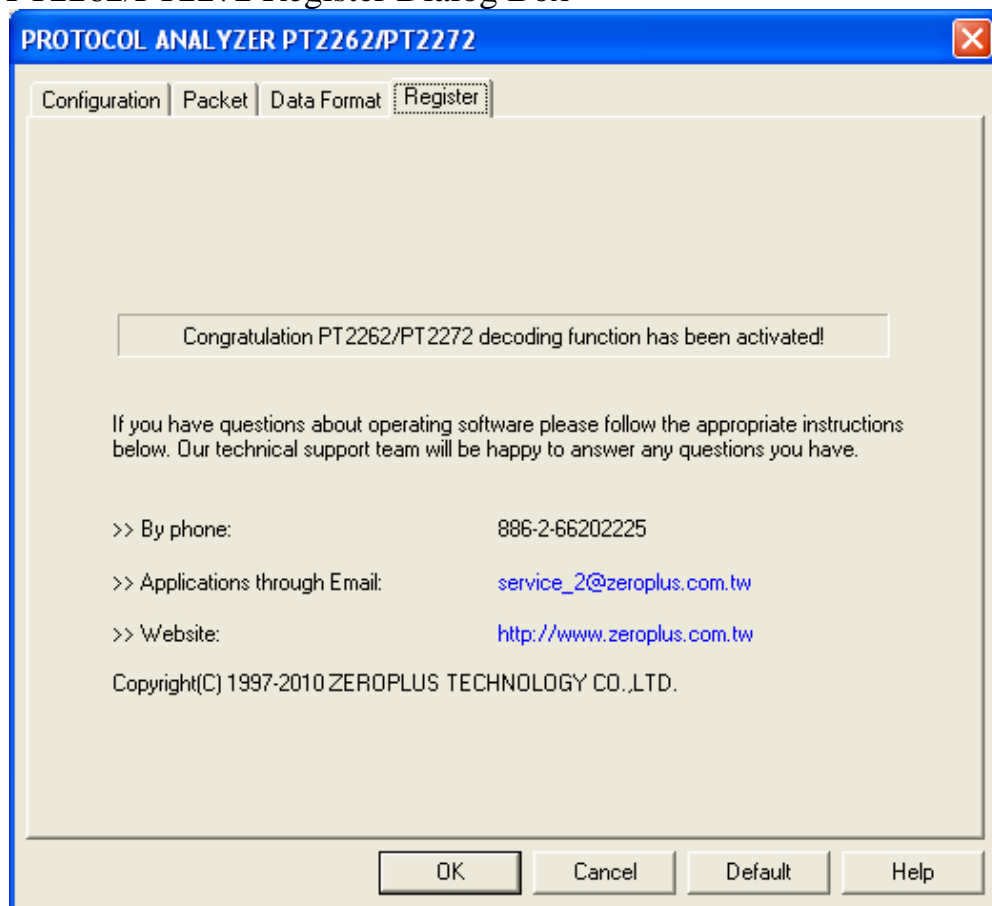
PT2262/PT2272 Data Format Dialog Box



Users can set the Data Format of the Data as their requirements. When selecting the option, Activate, the data format is decided by the settings in the Protocol Analyzer; when not selecting the option, Activate, the data format is decided by the settings in the main program.



PT2262/PT2272 Register Dialog Box

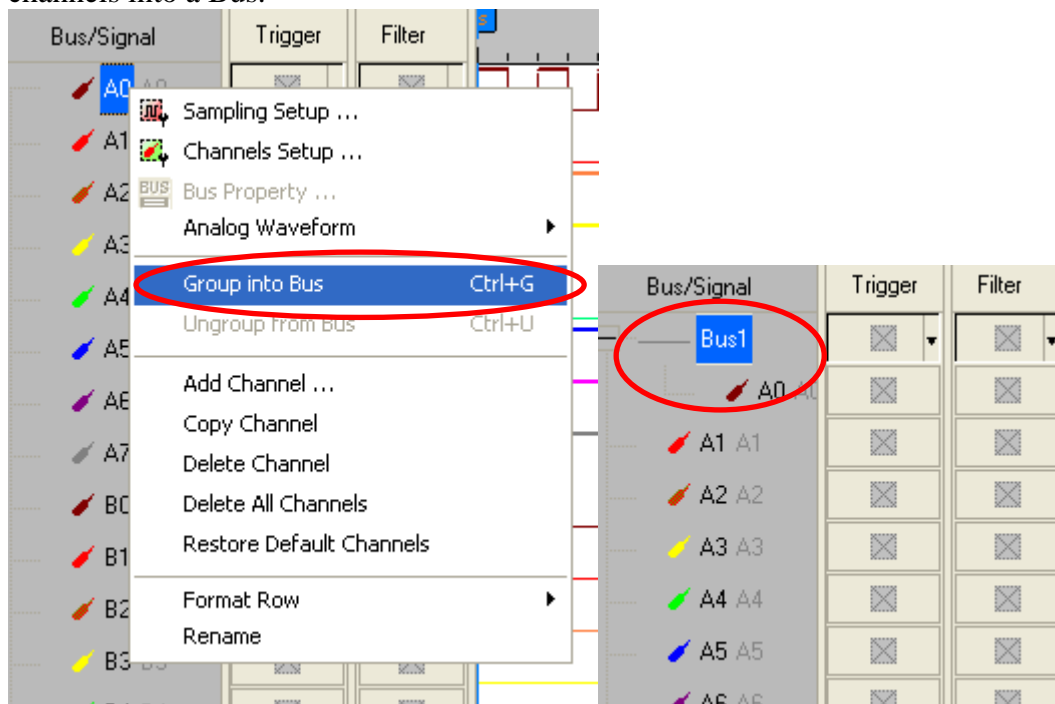


There is ZeroPlus company information. If you have any questions about software operations, you can contact ZeroPlus by Telephone or Email.

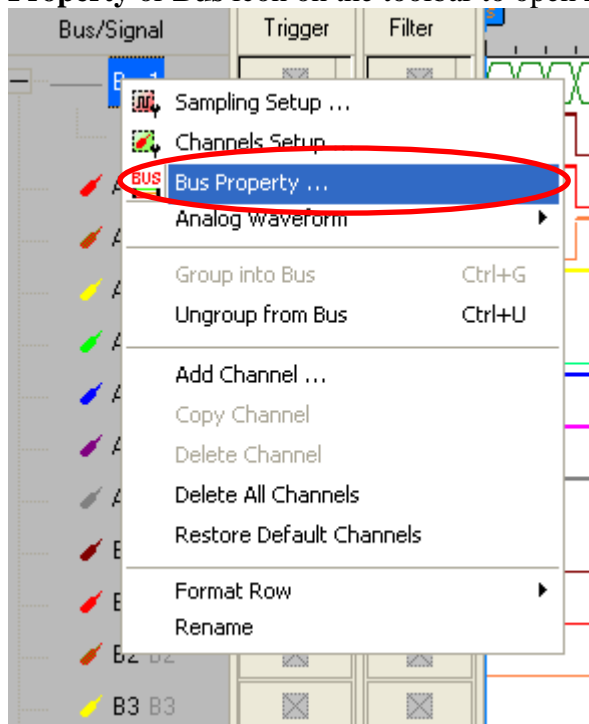


5 Operating Instructions

STEP 1. Group the unanalyzed channels into **Bus1** by pressing the **Right Key** on the mouse. PT2262/PT2272 needs one channel to decode signals, so it is necessary to group one or more channels into a Bus.

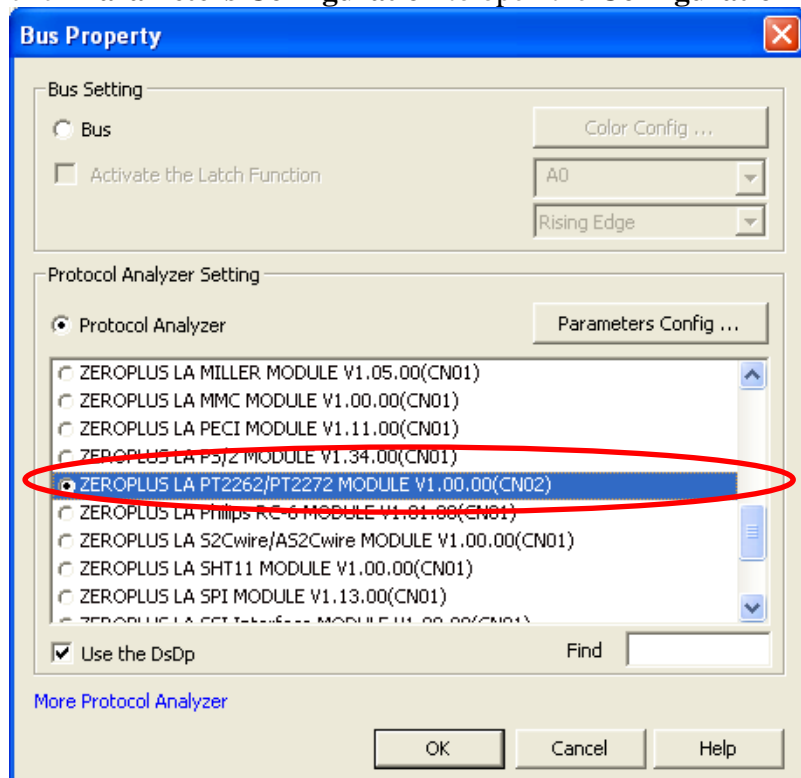


STEP 2. Select **Bus1**, and press **Right Key** on the mouse to list the menu, then press **Bus Property** or **Bus** icon on the toolbar to open **Bus Property** dialog box.

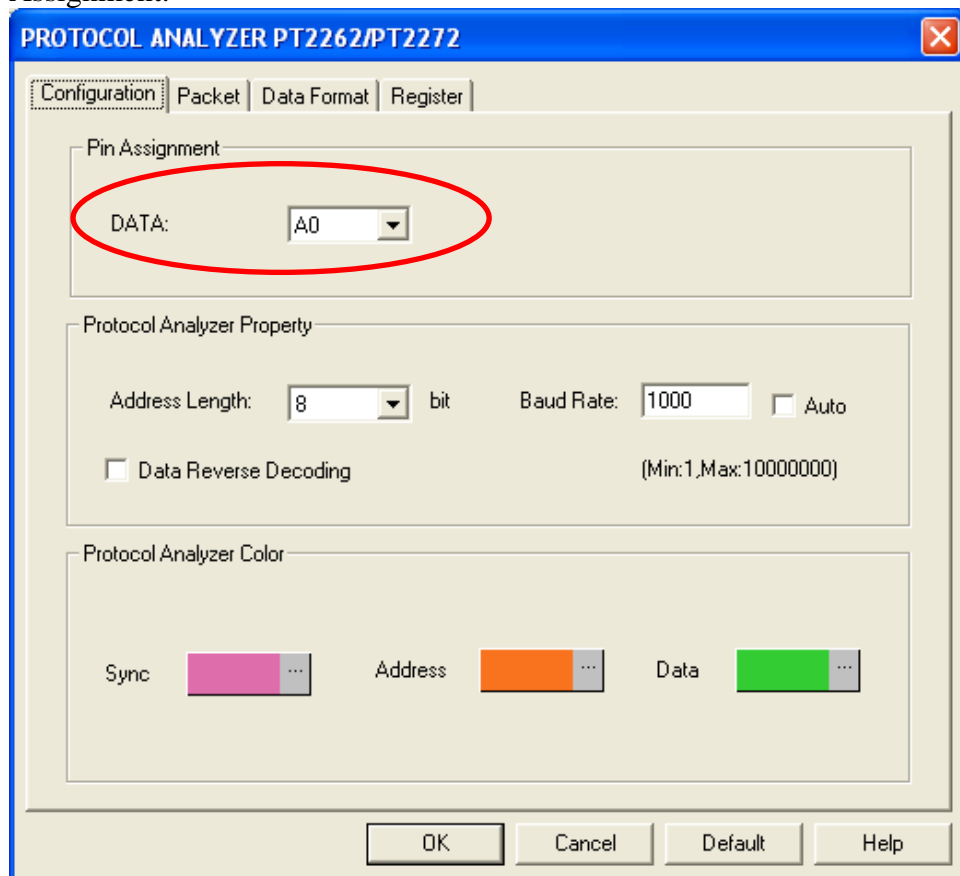




STEP 3. For Protocol Analyzer PT2262/PT2272 Parameters Configuration, select Protocol Analyzer, and then choose **ZEROPLUS LA PT2262/PT2272 MODULE V1.00.00(CN02)**. Next click **Parameters Configuration** to open the **Configuration** dialog box.

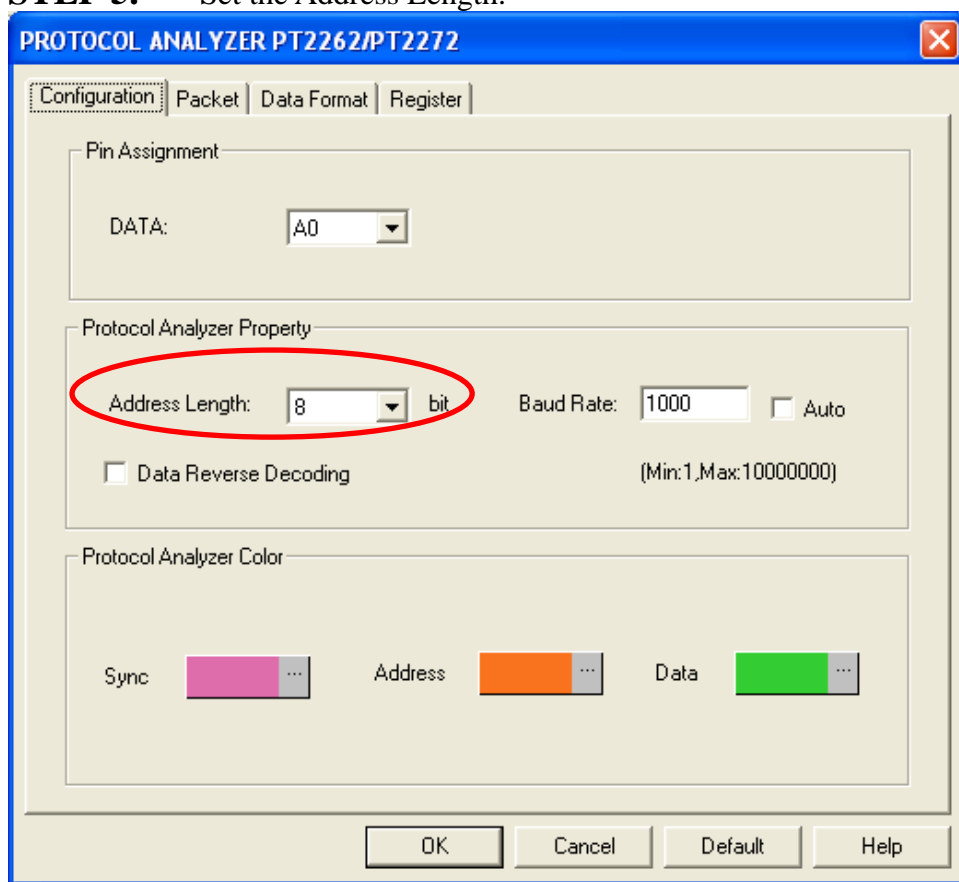


STEP 4. Open the **Configuration** dialog box, and set the channel for the DATA in the Pin Assignment.

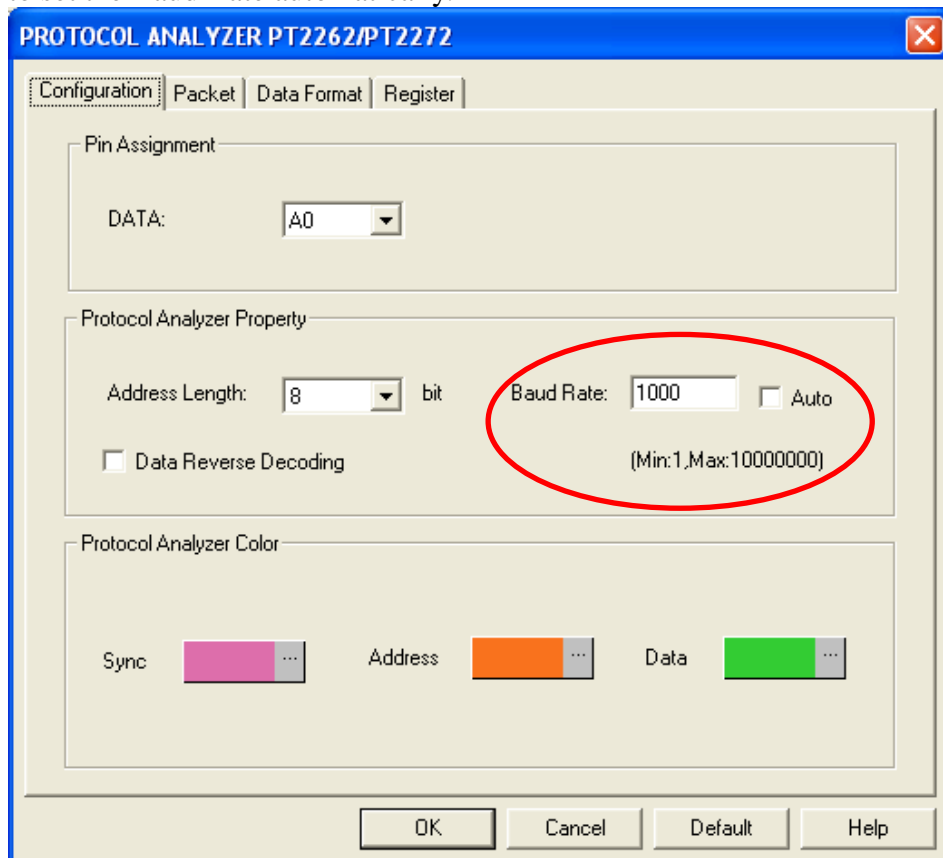




STEP 5. Set the Address Length.

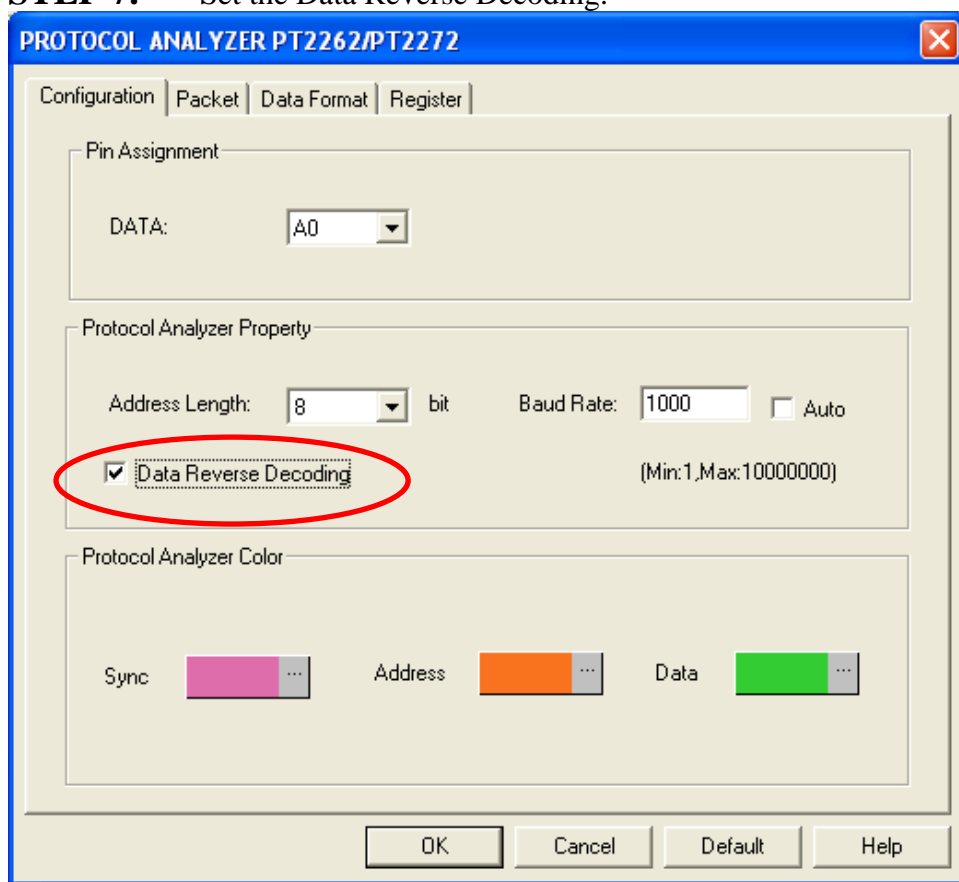


STEP 6. Set the value of the Baud Rate in the range from 1 to 10000000, or select the **Auto** to set the Baud Rate automatically.

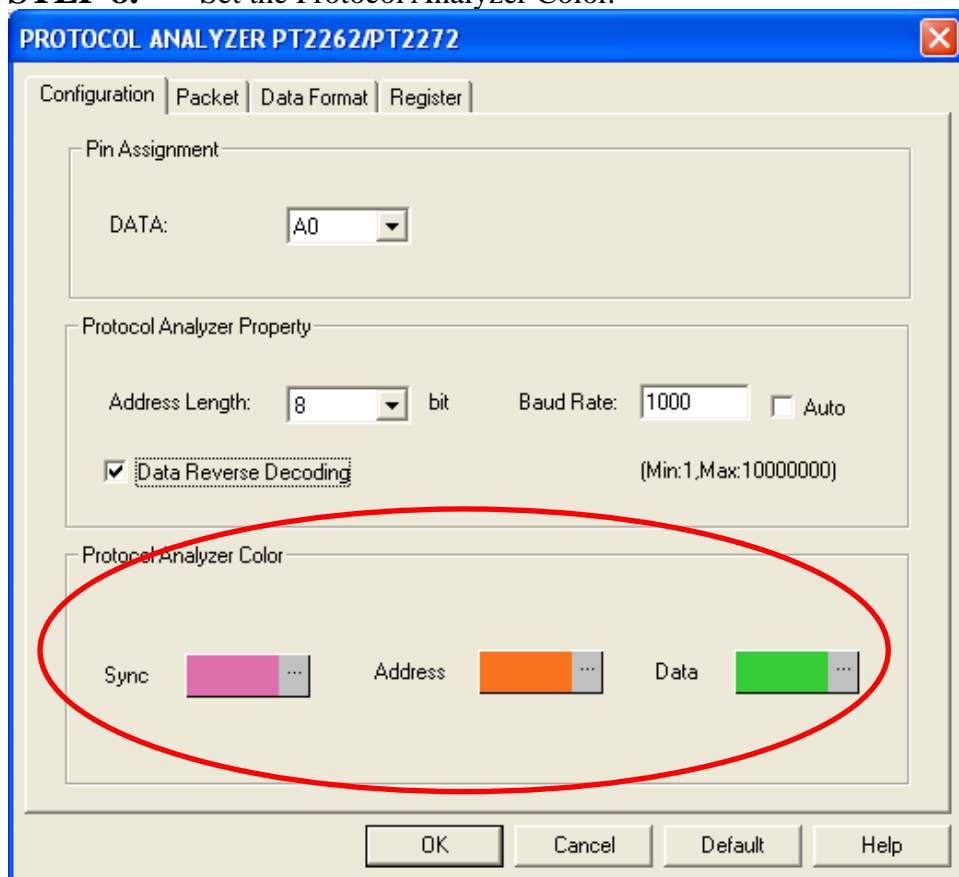




STEP 7. Set the Data Reverse Decoding.



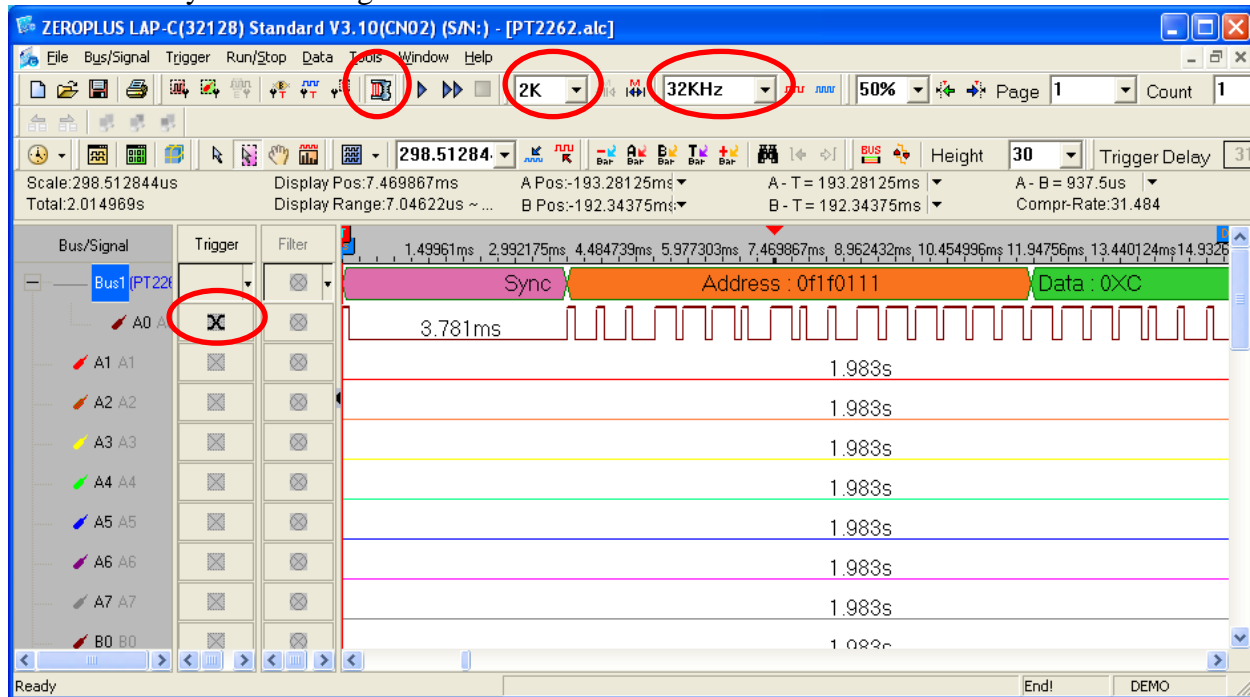
STEP 8. Set the Protocol Analyzer Color.





STEP 9. Following pictures show the completion of the protocol analyzer decoding and packet list. The Compression is activated. And the trigger condition is set as Either Edge, the memory depth is 2K; the sampling frequency is 32 KHz (the sampling frequency should be more than thirty-two times higher than the signal to be tested).

Protocol Analyzer Decoding



Packet List

